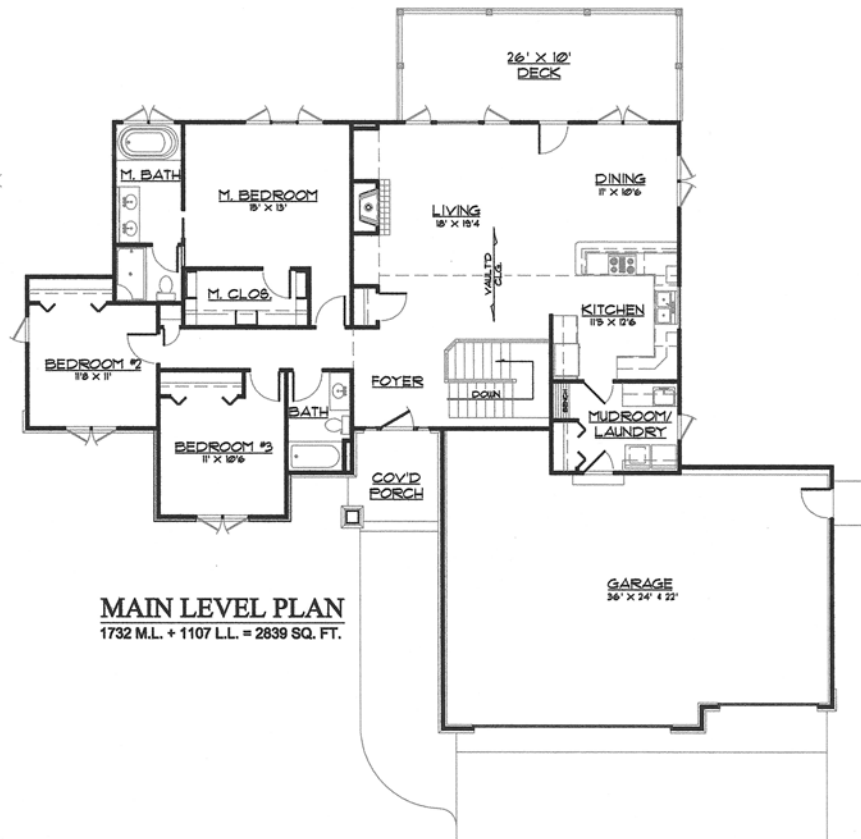




**FRONT ELEVATION**



**LOWER LEVEL PLAN**  
1732 M.L. + 1107 L.L. = 2839 SQ. FT.



**MAIN LEVEL PLAN**  
1732 M.L. + 1107 L.L. = 2839 SQ. FT.

**Ashland Park**  
**"Bridgeport"**  
Traverse City, Michigan